

# Cylinder pressure regulator HP 102

- single stage in stainless steel electropolished with purge system for corrosive gases



## Description:

HP 102 is a single stage cylinder regulator with integrated inert gas purge system.

The regulator is equipped as a standard with gas specific cylinder connection according DIN 477 or other common national standards, relief valve and inert gas purge system on the high pressure side.

## Application area:

For corrosive gases and gas mixtures with high requirements on safety, tightness and compatibility of material.

## Technical Details:

Body:	stainless steel 1.4404 electropolished
Seat:	PCTFE
Diaphragm:	1.4435
Leakage rate: against atmosphere	$10^{-8}$ mbar l/s He
Purity:	$\leq 6.0$
Max. pressure inlet:	300 bar
Outlet pressure ranges:	0,1-3, 1-6; 1-12; 1-17 bar
Operating temp.:	-20°C up to +70°C
Gauge:	safety version to EN 837-1 KL1,6
Dimensions (wxhxd):	205 x 95 x 205
Weight:	2200g
Threads:	NPT 1/4" f

## Hornung Quality standard

The company Hornung is certified to

**DIN EN ISO 9001 and ISO 14001:2009.**

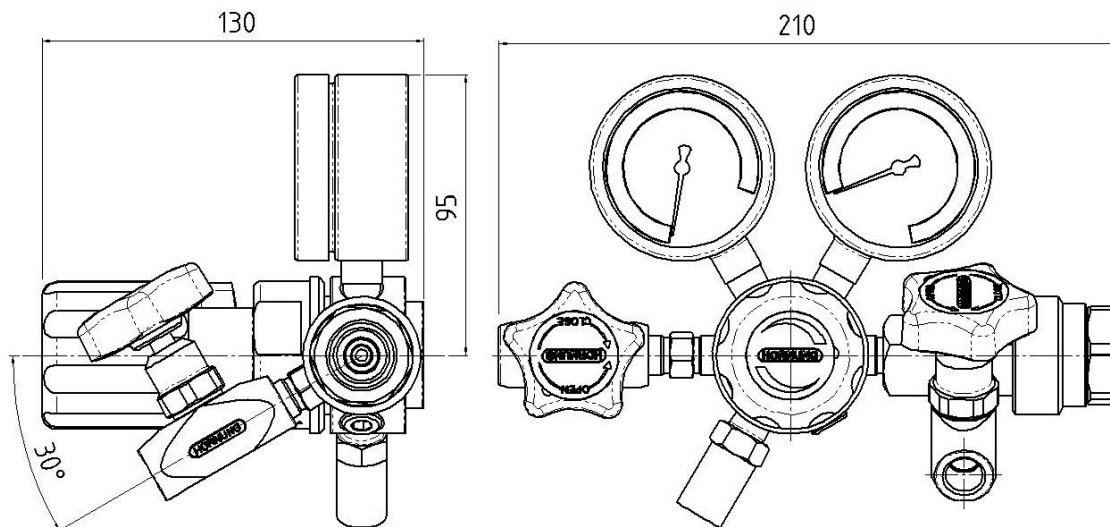
All single parts are manufactured, assembled and tested by in-house production.

The finished parts are therefore under all criteria of German quality control with 100% final inspection.

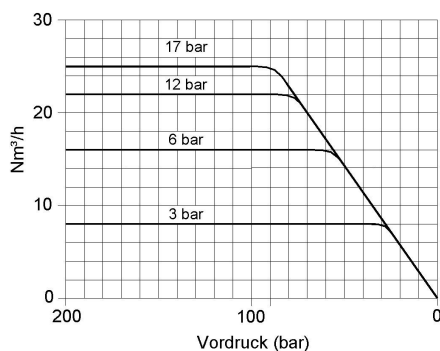
Hornung GmbH  
Rathenaustraße 55, 63263 Neu-Isenburg

Phone: +49 6102 7883-70  
Fax: +49 6102 7883-40

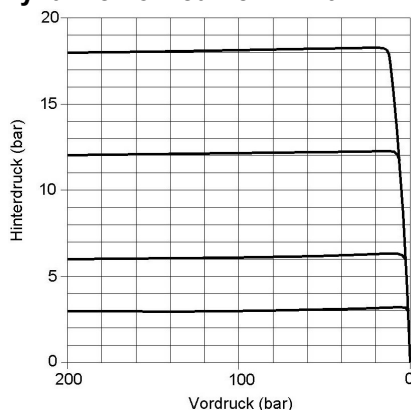
[www.hornung.org](http://www.hornung.org)  
[info@hornung.org](mailto:info@hornung.org)



### Performance curve HP 102



### Dynamic flow curve HP 102

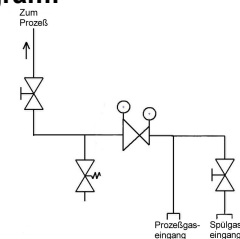


### Accessories:

See total catalogue segment

5. Diaphragm shut-off and metering valves
7. Gauges, screws, compression fittings, cylinder holders and accessories

### Flow diagram:



### Ordering information:

#### Inlet pressure:

- 1 = 200 bar
- 2 = 300 bar

#### Outlet pressure ranges:

- 2 = 0,1 - 3 bar
- 3 = 1 - 6 bar
- 4 = 1 - 12 bar
- 5 = 1 - 17 bar

#### Options for the outlet:

- 0 = 1/4" NPT f
- 1 = compression fitting 6 mm
- 2 = diaphragm shut-off valve
- 3 = diaphragm metering valve

### Order example:

Regulator type	1-stage
With purge system	68

68-	1	1	2	2	Gasart
Type	Mat.	P1	P2	Opt.	Type of gas